



# **WANT TO SAVE TIME !**

## **TRY USING GEMS TREASURE CHEST**

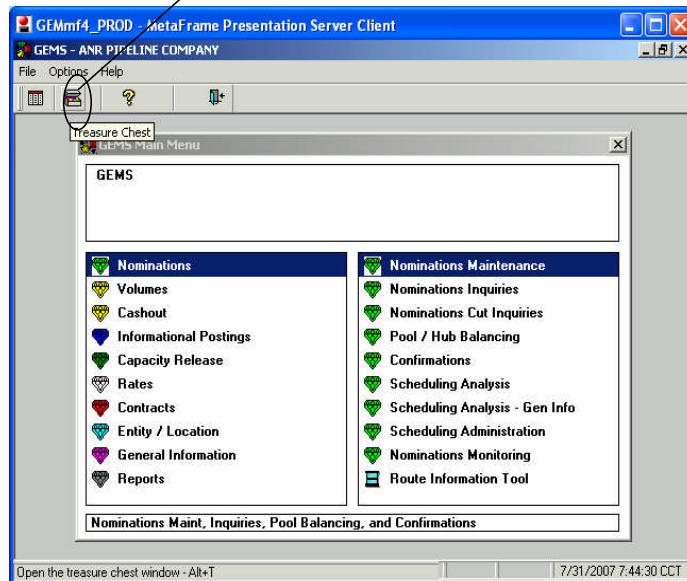
### **JUST LIKE ANR EMPLOYEES**



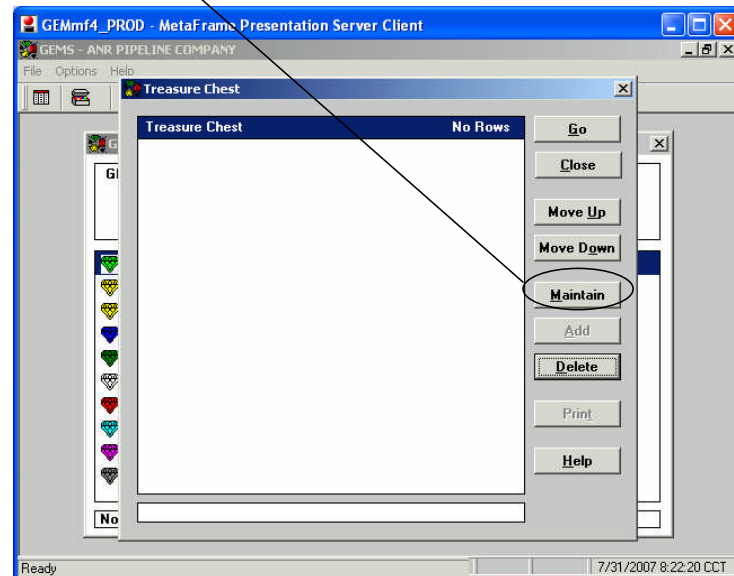
A Gems Treasure Chest helps to toggle between screens which are used most often. You can select items saved to your Treasure Chest to access different screens quickly.

How to set up your Treasure Chest:

Select: Treasure Chest Icon from any  
Gems Screen



Select : Maintain





# GEMS TREASURE CHEST



- 1 - Double Click on any Menu item
- 2 - Highlight item and double click (bottom screen) which will put it into the Treasure Chest (top screen)
- 3 - Continue to highlight and double click each item to be added to the Treasure Chest

To access: Select the Treasure Chest Icon from any Gems screen, then double click on screen to open

